

2016 20

2016

2016

2016 31

2016

1

2016

2

2016

3

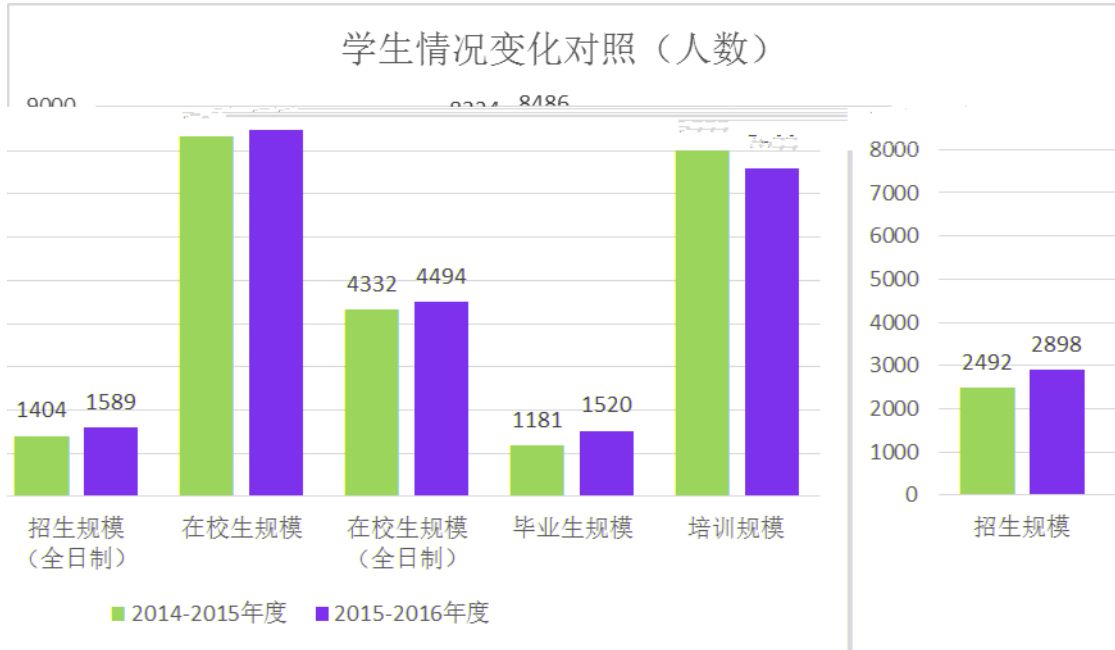
2016 9 1

2016

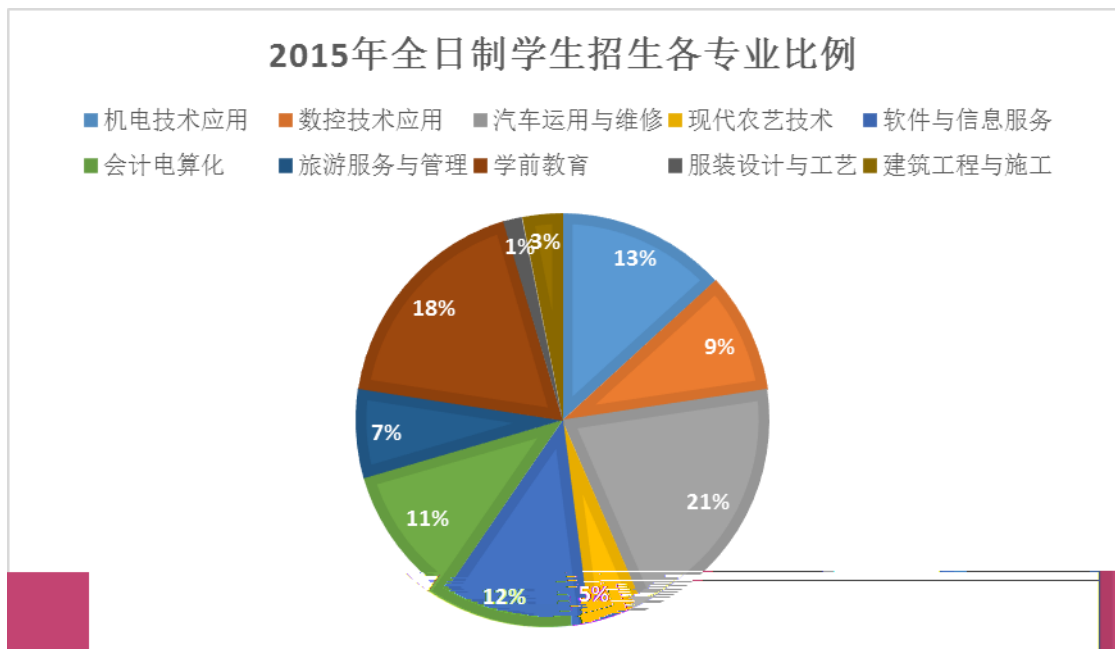
2016	22.04	330.6	
9.5	2.4		
2015	2912		
1601		1311	136
	19	8486	
4494	99.02%	2016	1520
	7600	1-1	

1-2 2015

1-1 2014 2015



1-1



1-2 2015



1

2016 8 6056.16

2459.16 1.3476

0.4277 1-4

1-4

			/
2015	3719.2811	4043	9199.31
2016	6056.16	4494	13476.10

2

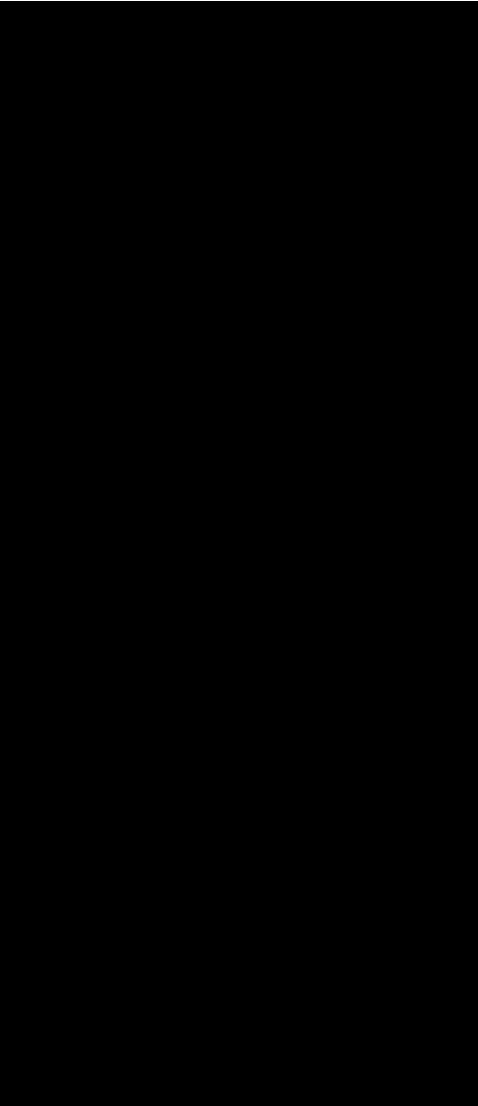
2016 8 31 1-5

1-5

			20	
			16	
			1	
			6	
			2	
			1	
			12	
			1	
		Cad	25	
			20	

			2	
			1	
			1	
			6	
			1	
			1	
			2	
			2	
			10	
			16	
			32	
	Cad	Cad	30	

1



			15		
			19	4	
			3		
			1		
			20		
			1		
			2		
			2		
			2		
			2		
1			2		
			6		
			6		
			40		
			40		
			12		
			12		
			12		
			24		
			12		
		PLC	PLC	12	
				48	
				5	
				2	
			8		

			40		
			40		
			9		
			40		
1	X B		4		
			12		
			48		
			40		
			40		
			40		
			40		
			20		
2			9		
			2		
				2	
				6	
				2	
				3	
				1	
				1	
				2	
				2	
				2	
				18	
				4	



			2		
			2		
			3		
			20		
			4		
			2		
			32		
			8		
			27		
			8		
			10		
			5		
			4		
			3		
			4		
			6		
			1		
			1		
			4		
			ABS	2	
			ABS	3	
			ESP	2	
		2			6
	12				
	7				

			7	
			36	
	2		30	
	1		24	
			10	
			40	
			18	
	1		15	
	2		18	
			8	
			2	
			30	
			20	
			1	
			1	

			14	
	1		20	
	2		40	
			40	
	1		51	
	2		41	
			22	
			20	
			122	
			61	
			56	
			54	
			48	
			41	
			41	
			41	
			49	
			41	
			41	
			24	
			4	
			8	
			40	
			24	
			2596	1290

2596 2016

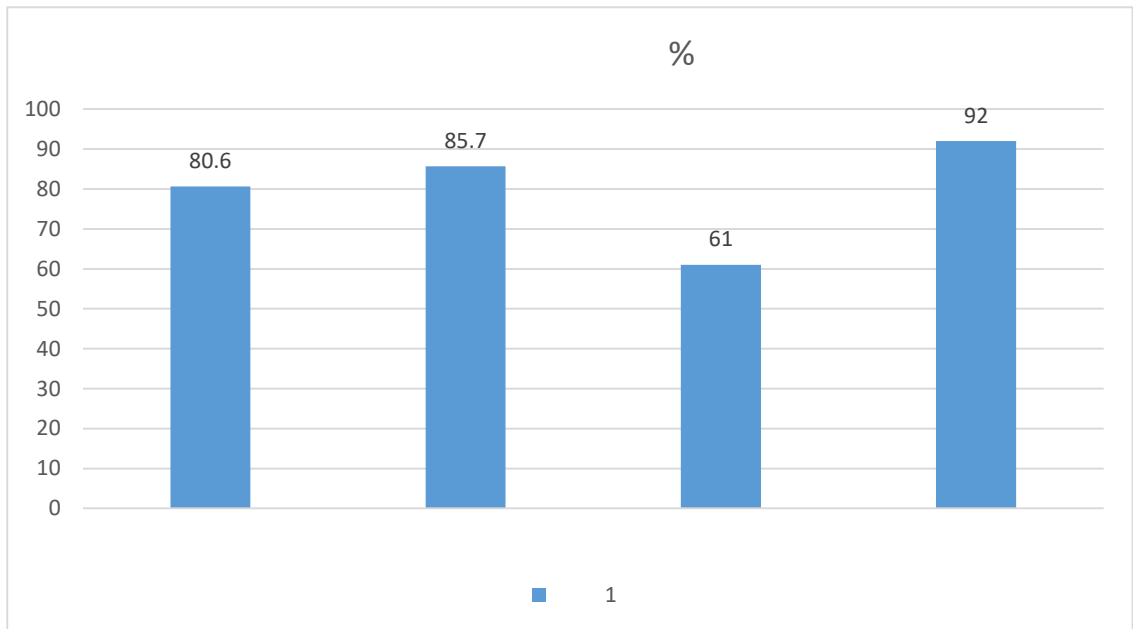
1290

1-6

1-6

/

2-1



2-1

2015

4

7

3

2016

7

1

14



[2013]58

2015

2000

2-1

2-1

	2014-2015		2015-2016			
	324	562 000.00	315	629000	67 000.00	11.92%
	3909	8 025 852.00	3971	10257465	2 231 613.00	27.81%

2014-2015

121487.00

2015-2016

376234.17

254747.17

2000

2000

2015

98.23% 2016

98.55%



2001

100

2010

2014

10

10

1

2

10

3

2016-2019

4

5



98

7000

17

26

52

3-5

10

3

7

8

10

93

53

15

394.31		842	PPT	954	
580	8557		688	66.72	
112	153.53		36		9
	27				
9					

10				6	
2015	10		2015	12	
	2016	4			
	SeS		2016	7	

14

94

30

132

20

( )

1

2



3

1

2015 11

4

1

3

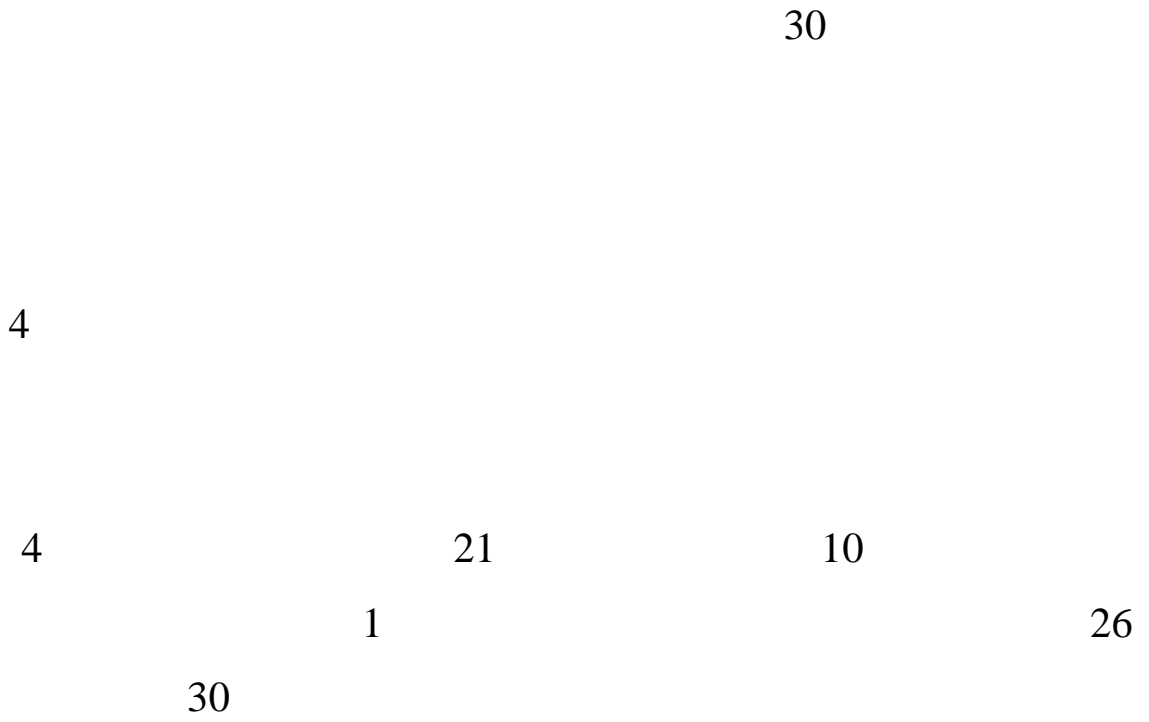
2

3

2015 7

2016 5

3



5.62%

100%

1

2

2

3

4

1

2

1

3

2

2016 80% 2015

37 2000

2012 2016

80%

10

3

6

100%

2015 89.23% 2016 92.31%

5-1

			(%)	
	2015	2016	2015	2016
	A	A	100	100
	A	A	100	100
	B	A	80	100

	B	B	80	80
	B	B	80	80
	A	A	100	100
	B	A	80	100
	A	B	100	80
	A	A	100	100
	A	A	100	100
	B	A	80	100
	B	B	80	80
	B	B	80	80
			89.23	92.31
	A B C	A B C		

1

6000



237 2015 10

2 136

2

3

96

3

3

18

12

2

1

2

3

1

2

主

6-1

		2014-2015	2015-2016		
		77,921,258.29	78,988,597.21	1,067,338.92	1.37%
		56,051,258.29	76,792,597.21	20,741,338.92	37.00%
1.		48,981,258.29	68,578,597.21	19,597,338.92	40.00%
2.		7070000	8214000	1,144,000.00	16.18%
		21,870,000.00	2196000		
		1870000	2196000	326,000.00	17.43%
		20,000,000.00			

6-1

1

2014

[2013]58

6-2

6-2

	2014-2015		2015-2016			
	3909	8,025,852.00	3971	10257465	2,231,613.00	27.81%

2

2014-2015

7100000.00

2015-2016

9650000.00

10

20%

—

8000

2011

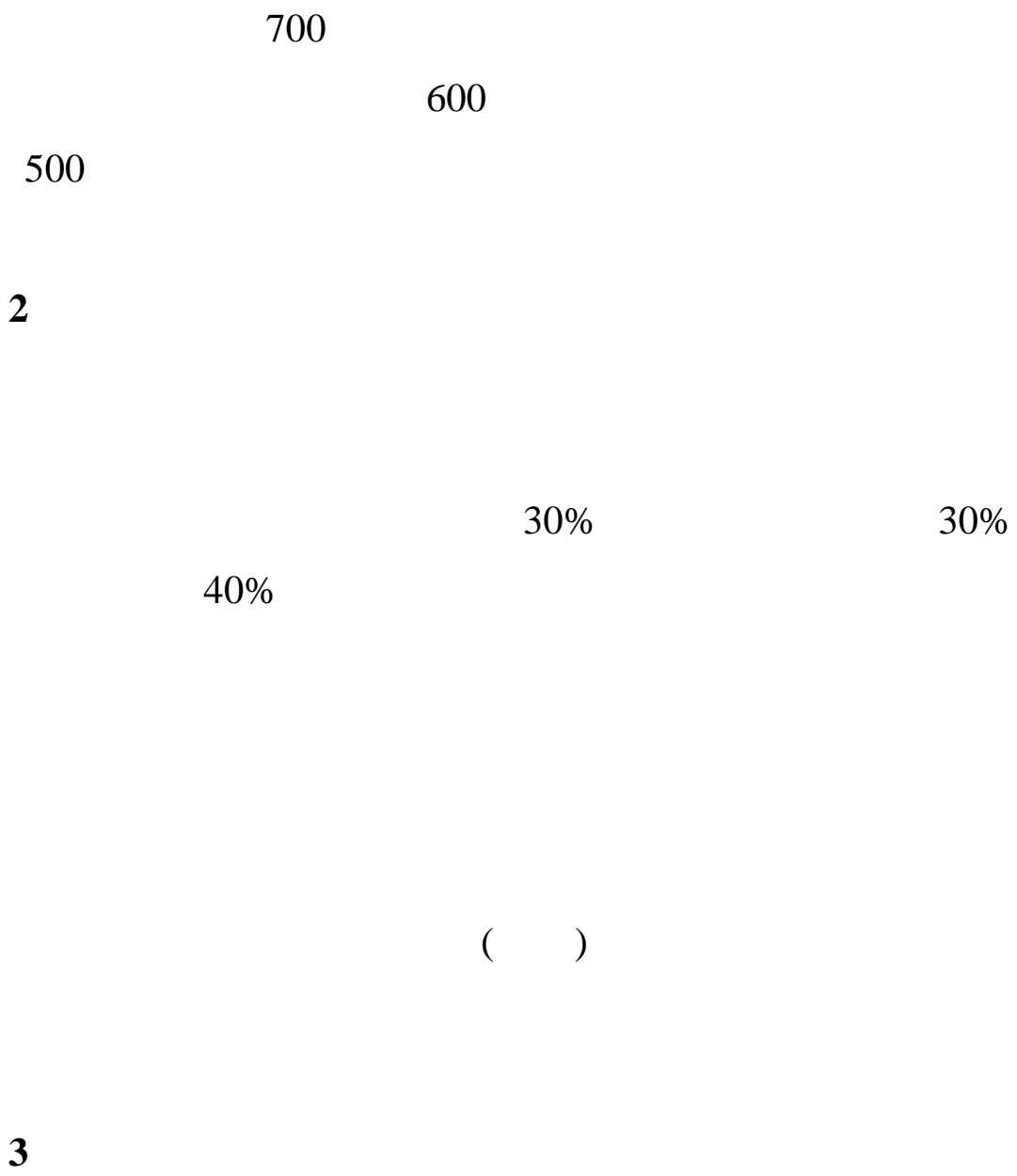
1

2

3

**1**

800





**1**

( )

**2**

**3**

20%

1

100%

30%

70%

**1**

80 20 100  
 80% 80  
 1 20% 20  
 1  
 200 100  
 100  
 60% 100 1  
 2.5  
 20% 100 1  
 5  
**60**  
 80% 100 1  
 2.5  
**85** 20%  
 100 1 5  
**2**  
 85%

70%

60%

60-69%

70%

60%

2013 9  
2016 4

1  
2016 280  
4494 1:16.05  
1:14 260  
1:17.28  
2

3

4

5

1

2

3

4

5

2016

2016 11 28



1.		2016	
			1
2.		2016	2
3.			48

( 2016 年 )

2016 9 1